



BONDING BASE  
COATS

# VELQUA

WATER-BASED EMULSIFIED  
BITUMINOUS PRIMER

Technical data sheet

## Description

Low viscosity fast drying water-based non toxic bituminous emulsion suitable for use either as a base coat for laying bituminous membranes or as a first waterproofing layer for retaining walls, vertical walls, eaves, flashings and gutters or as an antirust or protective layer for pipes, tanks or buried pilings. Due to the absence of solvents, toxic vapours or unpleasant smells, it can be used in closed, poorly ventilated areas. **VELQUA** is not subject to the provisions of ADR and therefore it is not subject to any constraint related to the transport or storage of dangerous goods.

## Fields of application

Suitable for use either as a base coat for laying prefabricated bituminous membranes or as a protective layer for other types of surfaces, such as concrete or metal ones. It may change depending on surface absorption rate.

## Laying instructions

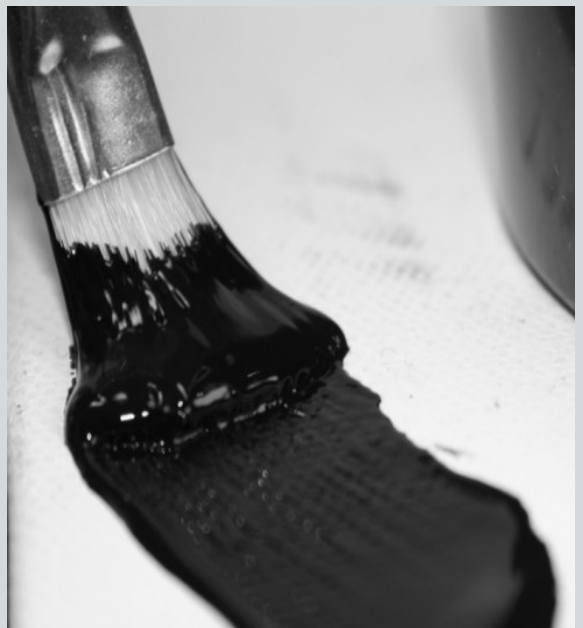
Mix well before use without the help of a mechanical stirrer. Friable or non adhesive material should be previously removed from the surface to be treated. Applicable by roller, broom, brush or airless sprayer. Do not apply at a temperature below +5°C and never apply in the presence of persistent fog or in case of imminent risk of rain which may wash it away. Painting tools can be cleaned with water if the product is still wet, but if it dries, it is possible to use solvents.

## Consumption

Ranging from 0,150 to 0,250 kg/m<sup>2</sup>

## Performance

- ✓ Products not subject to ADR not requiring special permits
- ✓ Fast drying primer
- ✓ Non toxic, non flammable products





BONDING BASE  
COATS

# VELQUA

WATER-BASED EMULSIFIED  
BITUMINOUS PRIMER

Technical data sheet

## Warning

Do not apply at a temperature below + 5°C or higher than + 35°C, and never apply in the presence of persistent fog or in case of imminent risk of rain which may wash it away.

Do not use high speed mechanical stirrers for product mixing in order to avoid bituminous emulsion breakage.

## Chemico-physical properties

Parameter	Value	Measurement unit	Tolerance
APPEARANCE	Viscous liquid	-	-
COLOUR	Brown/black	-	-
ODOUR	Characteristic smell	-	-
DRY RESIDUE	30	%	± 5
SPECIFIC WEIGHT	1,00	Kg/l	± 0,05
pH (25°C)	11,5	-	± 0,5
BROOKFIELD VISCOSITY AT 20°C	200	cPs	± 50
DRYING TIME AT 20° C R.H. 50%	2 - 3	h	-

## Packaging and storage

Products packed in 5, 10 and 18 kg buckets to be stored in sheltered areas at a temperature not below + 5 °C or not higher than + 35°C.

Store in tightly closed containers providing protection against atmospheric agents.

**IT FEARS THE FROST.** It must be used within two years of the purchase date.