

LIQUID MEMBRANES PAINTS AND ADDITIVES 1-2016



Liquid waterproofing
and protection products



www.iivela.it

TABLE OF CONTENTS

✓ The Company	Pag. 3
✓ Divisions	Pag. 4
✓ Liquid waterproofing products	Pag. 5
✓ New generation certified high performance products	Pag. 6
✓ IIVELA+ Line	Pag. 7
✓ Continuous liquid membranes	Pag. 13
✓ Accessories	Pag. 18
✓ Neutralizing systems for asbestos cement	Pag. 19
✓ Solvent-based primers	Pag. 21
✓ Water-based primers	Pag. 22
✓ Protective coatings	Pag. 23

THE COMPANY

EXPERIENCE > COMPETENCE > KNOW HOW > TECHNOLOGY > RESEARCH



IIVELA was founded in the late thirties and represents, in many aspects of its history, an emblematic model of a wave of entrepreneurial activity across the country over that period and during the years which followed.

The industrial experience reflects a constant evolution in the field of research, originally focused on chemical products, now specialising in waterproofing, thermo-insulating and insulating products in the industrial or building sector.

IIVELA provides a wide range of products in order to satisfy building market requirements.

The latest lines of thermal and acoustic insulation materials offer ecological, safe, reliable and easy to use products.

Staff quality, organisation and technical know how is part of a business philosophy IIVELA puts at your disposal.

A Company always moving with the times, or rather always staying ahead of the times.



DIVISIONS - Ask for catalogue or price-list of other IIVELA divisions



BITUMINOUS MEMBRANES AND COUPLED SYSTEMS

PREFABRICATED BITUMINOUS MEMBRANES - traditional, self-adhesive membranes, breathable fabrics, steam brakes, anti-root membranes. Waterproofing membranes for special applications. Tegola Canadese

VELASYSTEM COUPLED PANELS - extruded polystyrene foam (XPS), sintered expanded polystyrene (EPS) and polyurethane insulation panels coupled in rolls or sheets with various types of bituminous membranes.

ALL THE PRODUCTS BELONGING TO THIS DIVISION CAN BE FOUND IN THE NEW CATALOGUE OR PRICE-LIST RELATING TO BITUMINOUS MEMBRANES AND COUPLED SYSTEMS



THERMAL AND ACOUSTIC INSULATION MATERIALS

THERMAL AND ACOUSTIC INSULATION PRODUCTS- extruded polystyrene foam (XPS), sintered expanded polystyrene (EPS), expanded polyurethane (EPU), glass wool, rock wool, wood fibre, reticulated expanded polyethylene insulation panels, aphonix bituminous mix, rubber granules and new generation of multilayer reflective insulation panels.

ALL THE PRODUCTS BELONGING TO THIS DIVISION CAN BE FOUND IN THE NEW CATALOGUE OR PRICE-LIST RELATING TO THERMAL AND ACOUSTIC INSULATION PRODUCTS



LIQUID WATERPROOFING MEMBRANES AND PROTECTIVE COATINGS

IIVELA+ LINE certified high performance products UNII+ continuous fibre-reinforced liquid waterproofing membrane with EC marking certified according to EN14891.

REFLEX+ ultra-reflecting protective paint having a high solar reflectance index (SRI= 105%) certified by EELab (Energy Efficiency Laboratory), making it one of the best materials used to reduce covering temperature.

SIL+ silane/siloxane protective paint having exceptional waterproofing properties ensuring natural surface breathability.

GRIP+ ultra sealant for perfect adhesion of any kind of cement mix to any existing surface.

PROTECTIVE COATINGS AND LIQUID MEMBRANES, BITUMINOUS PRIMERS

ALL THE PRODUCTS BELONGING TO THIS DIVISION CAN BE FOUND IN THE NEW CATALOGUE OR PRICE-LIST RELATING TO LIQUID WATERPROOFING MEMBRANES AND PROTECTIVE COATINGS

LIQUID WATERPROOFING PRODUCTS

- **Protection against water infiltration**

Water is a vital element for the survival of human beings and other species existing on our planet and its relevance has never been questioned, but it should be constantly and carefully controlled, because it has a force which, if left uncontrolled, may have devastating effects. Therefore it is necessary to protect building structures, such as coverings, foundations, retaining walls, creating veritable barriers capable of withstanding the impact of progressive decay water creates in the areas of infiltration.

- **IIVELA for best waterproofing**

After a long period of research and due to a constant technological commitment, it is possible to produce bituminous membranes with the highest quality available on the market, solving any problem of protection against water and humidity. The choice of a good waterproofing system should be made considering various technical, environmental and design factors in order to avoid any risk of infiltration which may cause structural or financial damage.

- **An alternative to traditional waterproofing systems**

Our line of paints and continuous liquid membranes meets special sector requirements as a result of a search for advanced formulations. These products not only solve application problems when it is not possible to use traditional prefabricated membranes, but also comply with the requirements of European legislation for the protection of the environment.

Liquid membranes consisting of mixtures permitting rapid on site production of continuous waterproofing membranes regardless of the profile and shape of the surface with a substantial difference, consisting in long-lasting waterproofing properties due to the absence of overlaps.



NEW GENERATION CERTIFIED HIGH PERFORMANCE PRODUCTS

iVELA+
universal liquid technology



unii+



WATERPROOFING UNIVERSAL MEMBRANE, FIBRE-REINFORCED. SINGLE COMPONENT READY TO USE. UV RESISTANT

grip+



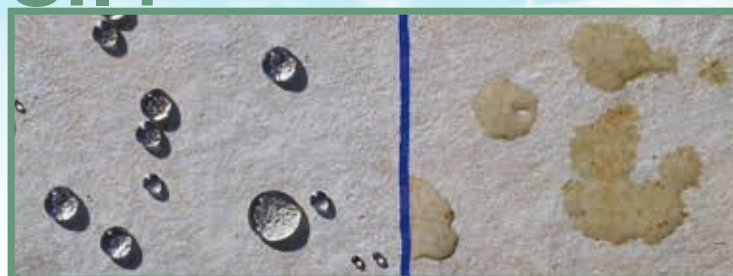
UNIVERSAL BONDING BRIDGE ENSURING, AFTER DRYING, PERFECT ADHESION OF ANY KIND OF CEMENT MIX TO ANY EXISTING SURFACE. AVOID REMOVING CERAMIC COATINGS.

reflex+



ULTRA-REFLECTING WHITE PROTECTIVE PAINT CAPABLE OF REDUCING SURFACE TEMPERATURE BY -35°C

sil+



INVISIBLE PROTECTION WATER REPELLENT FOR POROUS SURFACES, COATINGS, BRICKS, AND STONE MATERIALS.

unii+
fibre-reinforced liquid membrane



New generation single component fibre-reinforced liquid membrane. Due to the hybrid nature of emulsion polymers, it can be applied to almost any existing surface, acting as a waterproofing layer to be applied to the existing floors, even if extremely smooth, or under the tiles, which can be bonded directly to the waterproofing membrane by means of adhesives (according to EN 14891). Unlike common cementitious waterproofing products, it provides an increased level of elasticity and resistance to atmospheric agents, ageing and UV rays. Due to the mineral fillers selected and the chemical nature of polymers, the surface of the film is suitable as an adhesion promoter for any kind of cement mix.

Use

Due to water repellent characteristics of polymers and special additives, it is suitable for waterproofing surfaces coming in contact with moisture such as shower cabins, bathrooms, balconies and terraces. It can be perfectly adapted to any surface of complex geometry. It is available in various colours and is suitable for treatments also requiring good aesthetic results.

Laying instructions

For optimal distribution of the fibres, It should be applied by trowel, but it can also be applied by brush or broom. The fibres contained provide increased tensile strength which can be further improved inserting a fibreglass mesh between one coat and another. It should be laid on dry and clean surfaces, free of dust or friable particles and anti-adhesive substances. Do not apply at a temperature lower than + 5°C or higher than + 35°C, and never apply in areas with persistent fog or in case of imminent risk of rain. Standard colours: white, grey, brick red, green. Other colours are available upon demand. Average recommended consumption: 2 kg/m²



Green colour products are sold at 15 per cent more than the list price for each packaging

MARKING	PRINCIPLES
CE	PI-MC-IR
EN 1504-2	PROTECTION SYSTEMS FOR CONCRETE SURFACES

PRODUCT	weight per pack	Price per pack	packs/pallets
unii+	kg. 1		18 piece box
	kg. 5		125
	kg. 10		60
	kg. 20		48

ACCORDING TO	PRINCIPLES
EN 14891	O-P
LIQUID APPLIED WATER IMPERMEABLE PRODUCTS FOR USE BENEATH CERAMIC TILING BONDED WITH ADHESIVES	



unii+ not only complies with the requirements of EN 1504-2 for EC marking but also complies with the requirements of EN 14891 "Liquid applied water impermeable products for use beneath ceramic tiling bonded with adhesives".

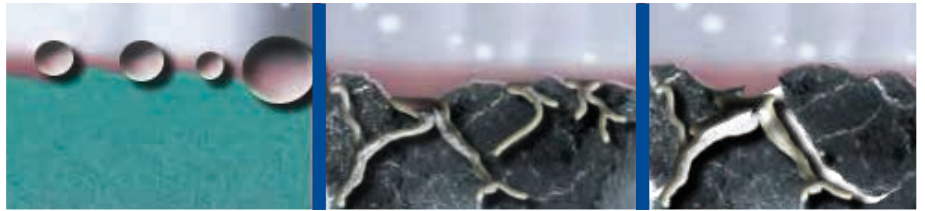
unii+

fibre-reinforced liquid membrane

Below you will find some special performance characteristics:

PARAMETER	UM	LIMIT	VALUE
IMPERMEABILITY TO WATER EXPRESSED AS CAPILLARY ABSORPTION - EN 1062-3	kg/m ² •h0,5	< 0,1	< 0,012

In case of waterproofing coverings made up of liquid membranes, the greater is surface water absorption capacity, the faster is product degradation level. Below 0 °C, trapped water starts to freeze increasing its volume, thus creating microcracks.



Below you will find some special performance characteristics:

PARAMETER	UM	LIMIT	VALUE
CRACK-BRIDGING ABILITY AT +20°C - EN 14891-A	mm	> 0,75	4,93
CRACK-BRIDGING ABILITY AT - 5°C - EN 14891-A	mm	> 0,75	2,47

The **Crack Bridging Ability** is the capacity of an elastic waterproofing membrane to bridge any cracks or solutions of continuity that may occur on concrete foundations without breaking, thus ensuring structure waterproofing.



Below you will find some special chemico-physical characteristics:

PARAMETER	UM	LIMIT	VALUE
CRACK-BRIDGING ABILITY AT +20°C - EN 14891-A	mm	0,75	4,93
INITIAL TENSILE ADHESION STRENGTH - EN 14891-A.6.2	N/mm ²	> 0,5	1,5
IMPERMEABILITY TO WATER EXPRESSED AS CAPILLARY ABSORPTION - EN 1062-3	kg/m ² •h0,5	< 0,1	< 0,012
COLD FLEXIBILITY (1mm thick dry product)	°C	-	- 15
DRYING TIME AT 20° C - U.R. 50% (dust free)	h	-	6/8

grip+

bonding layers



grip+ it is an exceptional bonding bridge ensuring, after drying, perfect adhesion of any kind of cement mix to various substrates including concrete, cellular concrete, plasterboard sheets, stone, brick, ceramic, glass, wood, insulation panels and metals.

grip+ it is based on APEO FREE water-based resin dispersions and therefore it can be applied inside and outside ensuring homogeneous plaster or skim coats. Ready to use and easy to apply.

Use

grip+ It can be used as an adhesion promoter before laying plaster or skim coats and can be applied as a bonding layer for cement-based adhesives before laying wall or floor tiles.

Laying instructions

grip+ It can be applied by brush, broom or roller. It should be laid on dry and clean surfaces free of dust, friable particles and anti-adhesive substances.

Wait approximately 72 hours before laying the next coat.

Do not apply at a temperature lower than + 5°C or higher than + 35°C, and never apply in areas with persistent fog or in case of imminent risk of rain.

Average consumption: 0.350 kg/m²

PRODUCT	weight per pack	Price per pack	packs/pallets
grip+	kg. 1		18 piece box
	kg. 5		125
	kg. 10		60
	kg. 20		48



Chemico-physical characteristics:

PARAMETER	UM	VALORE	TOLLERANZA
DRY RESIDUE	%	69	± 5
SPECIFIC WEIGHT	Kg/l	1,65	± 0,05
BROOKFIELD VISCOSITY (20 RPM, Gir. n°5, 25 °C)	Cps	2900	± 500
PULL OFF STRENGTH OF COATINGS ON CONCRETE	N/25cm ²	2300	-
PULL OFF STRENGTH OF COATINGS ON CERAMIC TILES	N/25cm ²	1846	-
DRYING TIME AT 20° C - U.R. 50% (dust free)	h	3/4	-

reflex+

ultra-reflecting protective paint



It's a single component ultra-reflecting paint based on water emulsion polymers and special additives having a high solar reflectance index (SRI = 105%) certified by EELab (Energy Efficiency Laboratory).

Use

reflex+, due to its certified 105% solar reflectance index, it is one of the best materials used to reduce covering temperature.

It is mainly used as a finishing coat for smooth or slated bituminous waterproofing membranes, ensuring increased chip adhesion and UV protection.

Laying instructions

It can be applied by brush, roller or airless sprayer to the surface to be protected. Do not apply to any surface which is destined to remain in permanent contact with water.

It can be applied to bituminous membranes only 6 months after laying and must not be applied during the warmest hours of a summer day.

Do not apply at a temperature lower than +5°C or higher than +35°C and never apply in case of imminent risk of rain which may wash it away.

In order to achieve a perfect finishing surface, it is better to apply two coats of **reflex+** with a consumption of approximately 0,4 kg per coat.



TYPE	weight per pack	Price per pack	packs/pallets
reflex+	kg. 5		125
	kg. 20		48

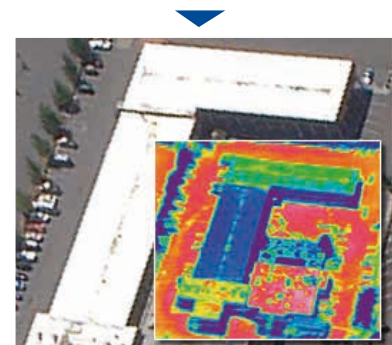
Comfort and energy saving

This phenomenon, known under the name of "urban heat island", is mainly due to increased absorption of solar energy from paved surfaces and concrete buildings. During the warmest hours of a summer day, roads and rooftops can often reach temperatures higher than 60-90°C.

Summer overheating of buildings due to solar irradiance affects the comfort of the people living inside of them, substantially contributing to power consumption for air conditioning and greenhouse gas emissions, but this phenomenon, with all that implies in terms of energy requirements can be limited using so-called cool roofs, which are surface finish materials and solutions having high and certified values of solar reflectance and thermal emissivity.



In infrared thermography, the blue colour refers to elements with high thermal reflectivity.



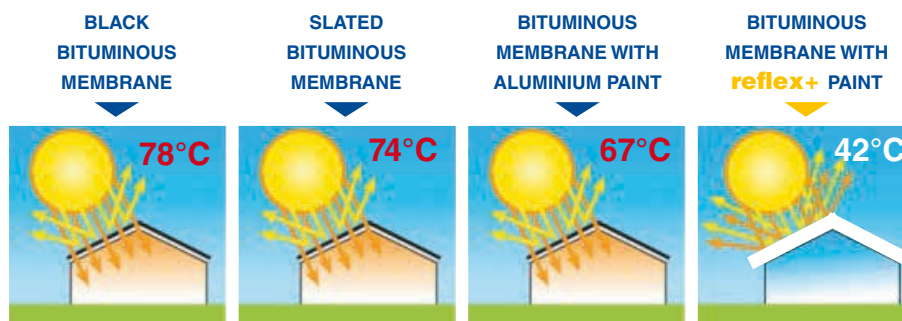
reflex+

ultra-reflecting protective paint

reflex+ it increases energy performance of solar pv panels not only for more powerful diffused or reflected lights, but also because surface temperature decreases, allowing them to be more efficient when working at lower temperatures.



reflex+ due to its certified 105% solar reflectance index, it is one of the best materials used to reduce covering temperature.



TYPE OF PRODUCT	REFLECTANCE	EMISSIVITY	SRI%	HIGHEST SURFACE TEMPERATURE
BLACK BITUMINOUS MEMBRANE	<0,10	>0,80	1	78°C
GREY SLATE MEMBRANE	<0,25	>0,80	21	74°C
WHITE SLATE MEMBRANE	<0,45	>0,94	53	63°C
PAINTED ALUMINIUM MEMBRANE	<0,45	>0,60	40	67°C
BITUMINOUS MEMBRANE WITH REFLEX+ PAINT	<0,84	>0,88	105	42°C *

*) **EELAB TEST REPORT:** DEPARTMENT OF ENGINEERING ENZO FERRARI, UNIVERSITY OF MODENA AND REGGIO EMILIA

sil+

protective water repellent treatment



Water-based silane/siloxane water repellent. The selected mixture of silanes and siloxanes makes it an exceptional water repellent without affecting its breathability and without altering its surface.

Use

It ensures a high degree of water repellency of terracotta and natural stone tiles, façades, coatings and concrete structures.

Laying instructions

sil+ can be applied by brush, roller, broom or airless sprayer. Ready to use product which must not be diluted. Apply evenly across the surface. Depending on material absorption, repeat the operation two or three times when the surface has dried.

SilFluo

protective water repellent treatment



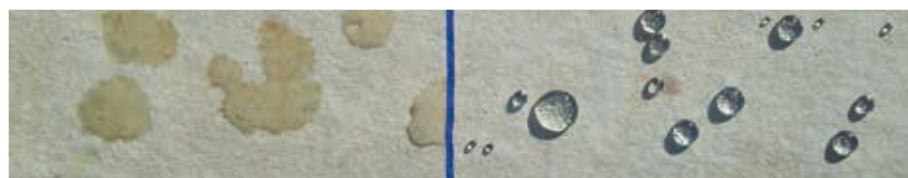
Colourless water and oil repellent impregnating agent based on a selected mixture of new generation silanes and fluorinated polymers providing excellent acid and alkali stability and resistance without altering chromatic appearance and surface breathability having an excellent penetration capacity. It protects the surface against water and oil.

PRODUCT	weight per pack	Price per pack	packs/pallets
sil+	lt. 1		18 piece box
	lt. 5		125
	lt. 10		60
	lt. 18		48
SilFluo	lt. 1		18 piece box
	lt. 5		125
	lt. 10		60
	lt. 18		48

INDICATIVE PERFORMANCE WITH ONE LITRE OF PRODUCT PER COAT:

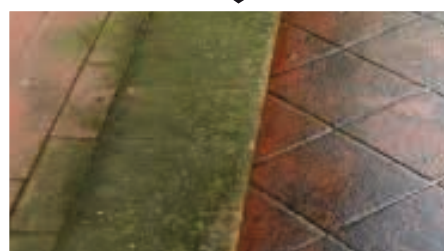
- TERRACOTTA TILES – 5/7 m²
- NATURAL STONE TILES – 9/10 m²

ALWAYS CHECK CONSUMPTION RATE DEPENDING ON THE POROSITY OF DIFFERENT SURFACES



UNTREATED
SURFACE

SURFACE TREATED
WITH **sil+**



VELAFLEX

liquid walkable membrane



New generation single component liquid membrane. Due to the hybrid nature of emulsion polymers, it can be applied to almost any existing surface, acting as a waterproofing layer to be applied to the existing floors, even if extremely smooth, or under tiles, which can be bonded directly to the waterproofing membrane by means of adhesives. Unlike common cementitious waterproofing products, it provides an increased level of elasticity and resistance to atmospheric agents, ageing and UV rays. Due to the mineral fillers selected and the chemical nature of polymers, the surface of the film is suitable as an adhesion promoter for any kind of cement mix with high resistance to foot traffic.

Use

Due to water repellent characteristics of polymers and special additives, it is suitable for waterproofing surfaces coming in contact with moisture such as shower cabins, bathrooms, balconies and terraces. It can be perfectly adapted to any surface of complex geometry. It is available in various colours and is suitable for treatments also requiring good aesthetic results.

Laying instructions

VELAFLEX can be applied by brush, roller or broom. It should be laid on dry and clean surfaces, free of dust or friable particles and anti-adhesive substances. Do not apply at a temperature lower than + 5°C or higher than + 35°C or in case of imminent risk of rain which may wash it away during the drying phase.

Do not apply to any surface which is destined to remain in permanent contact with water. It can be applied to bituminous membranes only 6 months after laying and must not be applied during the warmest hours of a summer day.

VELAFLEX permits to obtain coats having a thickness of 2 or 3 mm applying multiple coats of product, waiting until the previous one has dried before laying the next one.

In order to improve its mechanical properties, it is possible to insert a polyester or polypropylene non woven fabric between one coat and another.

Available colours: grey, brick red, white and green. Average recommended consumption: 2 kg/m²



Green colour products are sold at 15 per cent more than the list price for each packaging

PRODUCT	weight per pack	Price per pack	packs/pallets
VELAFLEX	kg. 1		18 piece box
	kg. 5		125
	kg. 10		60
	kg. 20		48



ECOFLEX liquid membrane



Liquid membrane made up of synthetic resin emulsions, elastomers and pigments of various colours providing high resistance to atmospheric agents, ageing, UV rays and foot traffic.

Use

Suitable for rebuilding or restoring deteriorated waterproofing membranes, for laying gutter tiles and for waterproofing gutters, downspouts, canopies, etc.

It is available in various colours and is suitable for treatments also requiring good aesthetic results.

Laying instructions

ECOFLEX can be applied by brush, roller, broom or airless sprayer. It should be laid on dry and clean surfaces, free of dust or friable particles and anti-adhesive substances. Do not apply at a temperature lower than + 5°C or higher than + 35°C or in case of imminent risk of rain which may wash it away during the drying phase. Do not apply to any surface which is destined to remain in permanent contact with water.

It can be applied to bituminous membranes only 6 months after laying and must not be applied during the warmest hours of a summer day.

ECOFLEX permits to obtain coats having a thickness of 2 or 3 mm applying multiple coats of product, waiting until the previous one has dried before laying the next one.

In order to improve its mechanical properties, it is possible to insert a polyester or polypropylene non woven fabric between one coat and another.

Available colours: grey, brick red, white and green. Average recommended consumption: 2 kg/m²



Green colour products are sold at 15 per cent more than the list price for each packaging

PRODUCT	weight per pack	Price per pack	packs/pallets
ECOFLEX	kg. 5		125
	kg. 10		60
	kg. 20		48



ROOFLEX - ROOFLEX FR

liquid membrane



Water-based liquid membrane made up of synthetic resins, elastomers and pigments of various colours providing high resistance to atmospheric agents, ageing, UV rays and maintenance foot traffic. The FR version is enriched with fibres in order to improve the mechanical properties of the product

Use

Suitable for rebuilding or restoring deteriorated waterproofing membranes, for laying gutter tiles and for waterproofing gutters, downspouts, canopies, etc.

It is available in various colours and is suitable for treatments also requiring good aesthetic results.

Laying instructions

ROOFLEX membrane can be applied by brush, roller, broom or airless sprayer, while the ROOFLEX FR membrane should be applied by trowel.

It should be laid on dry and clean surfaces, free of dust or friable particles and anti-adhesive substances. Do not apply at a temperature lower than + 5°C or higher than + 35°C or in case of imminent risk of rain which may wash it away during the drying phase. Do not apply to any surface which is destined to remain in permanent contact with water. It can be applied to bituminous membranes only 6 months after laying and must not be applied during the warmest hours of a summer day.

ROOFLEX permits to obtain coats having a thickness of 2 or 3 mm applying multiple coats of product, waiting until the previous one has dried before laying the next one.

In order to improve its mechanical properties, it is possible to insert a TNT 50 non woven fabric between one coat and another, while ROOFLEX FR membranes are self-protected.

Available colours: grey, brick red, white and green. Average recommended consumption: 2 kg/m²



Green colour products are sold at 15 per cent more than the list price for each packaging

PRODUCT	weight per pack	Price per pack	packs/pallets
ROOFLEX	kg. 1		18 piece box
	kg. 5		125
	kg. 10		60
	kg. 18		48
ROOFLEX FR	kg. 1		18 piece box
	kg. 5		125
	kg. 10		60
	kg. 18		48



ELASTOFLEX

bituminous liquid membrane



Elastoflex is a liquid state bitumen polymer membrane with excellent adhesion to different kinds of surfaces, good resistance to standing water and excellent resistance to atmospheric agents and UV rays.

Use

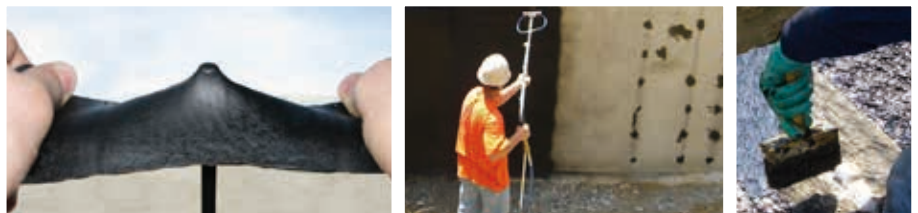
Suitable for waterproofing and protecting, both horizontally and vertically, or for waterproofing interventions on ancient bitumen polymer membranes even in case of subsequent application of aluminium or polymer based protective coatings such as REFLEX + (COOL ROOF system). After drying, it forms an elastic and continuous film with neither seams nor overlaps providing the structures with high resistance to atmospheric agents in general and particularly to UV rays. It can be left exposed. Occasionally walkable membrane (not for continuous traffic) with good resistance to standing water. It can be used instead of flame application of prefabricated bituminous membranes.

Laying instructions

It can be applied by brush, trowel, broom or roller. It should be laid on perfectly dry and clean surfaces. The slab should not contain more than 3 percent residual moisture. Otherwise, it is advisable to apply one coat of EPX TIXO acting as a vapour barrier. One coat of VELAPRIMER ACW (water-based primer, consumption 0,200 Kg/m²) should be previously laid on porous and/or dusty surfaces. The product should be applied in multiple layers until reaching a value of approximately 2,5/3 Kg/m² (due to the application of approximately two or three layers interposing a reinforcement between them). One coat of VELASET reinforced polyester fabric should be inserted between one coat and another to improve its mechanical properties.
Average consumption: 2,5/3 kg/m²

PRODUCT	weight per pack	Price per pack	packs/pallets
ELASTOFLEX	kg. 1		18 piece box
	kg. 5		125
	kg. 10		60
	kg. 20		48

HIGH DEGREE OF ELASTICITY (MORE THAN 800%) ▶



RESTORATION AND REPAIR NEW WATERPROOFING WORKS ▶



UNiBIT

bituminous liquid membrane



Liquid membrane in water dispersion based on bitumen modified with new generation polymers and selected fillers providing excellent adhesion to various kinds of surfaces, good resistance to standing water and excellent resistance to atmospheric agents and UV rays. The development of the new Grip Control technology allows safe application of different kinds of overlapping coatings, such as levelling compounds and cement adhesives or polymer coatings of different nature such as REFLEX+. Product innovation consists of combining a waterproofing system having a high content of bituminous emulsions with systems of different nature so as to ensure safe waterproofing works with an excellent cost-performance ratio.

Use

Suitable for waterproofing and protecting, both horizontally and vertically, concrete surfaces, metal, coatings, plasterboard, wood, cement surfaces, ceramic tiles, wooden roofs, balconies, terraces, foundations, bathrooms, showers, vases, flower pots and for the restoration of bitumen-polymer membranes.

Suitable for waterproofing ancient bituminous membranes and for the application of protective coatings such as REFLEX+ (COOL ROOF system), polymer and aluminium coatings.

Laying instructions

It can be applied by brush, trowel, broom or roller. It should be laid on perfectly dry and clean surfaces. The slab should not contain more than 3 percent residual moisture. Otherwise, it is advisable to apply one coat of EPX TIXO acting as a vapour barrier. Porous and/or dusty surfaces should be previously primed with one coat of VELAPRIMER ACW (water-based primer, consumption 0,200 Kg/m²). The product should be laid in multiple coats until reaching a value of approximately 2,5/3 Kg/m² (due to the application of approximately two or three coats). It can be used VELASET (reinforced polyester) between application two single coats of UNiBIT, to improve UNiBIT mechanical properties and to achieve uniformly minimum thickness recommended.



Red colour products are sold at 6 per cent more than the list price for each packaging

PRODUCT	weight per pack	Price per pack	packs/pallets
UNiBIT	kg. 1		18 piece box
	kg. 5		125
	kg. 10		60
	kg. 20		48



RESTORATION OF ANCIENT BITUMINOUS MEMBRANES



CONTINUOUS WATERPROOFING SYSTEM

VELASET

fabric reinforced with polyester and fibrglass

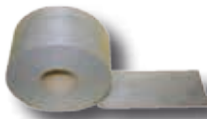


Reinforcing fabric with double reinforcement with polyester and fibreglass with high flexibility and excellent incorporation into the liquid membranes, unwrinkled due to stabilization, easy to apply, overlap or cut. It's a rot-proof product resistant to moulds or microorganisms.

PRODUCT	Roll dimensions m	Price €/m ²	Quantity per roll m ²
VELASET	1x100		100

VELAJOINT BAND

polyester felt covered waterproofing rubber

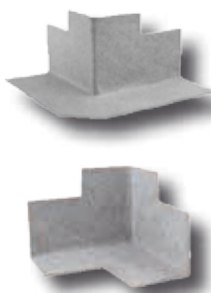


Joint-cover waterproofing rubber band covered on both sides with polyester felt improving adhesion to liquid membranes in general. The range includes special products called VELAJOINT ANGLE and VALJOINT EDGE to obtain either closed angles or open edges.

PRODUCT	Roll width cm	Price €/m	Quantity per roll m
VELAJOINT BAND 10	12		10
VELAJOINT BAND 50	12		50

VELAJOINT ANGLE/EDGE

polyester felt covered waterproofing rubber



Joint-cover waterproofing rubber band covered on both sides with polyester felt improving adhesion to liquid membranes in general. VELAJOINT ANGLE and VALJOINT EDGE to obtain either closed angles or open edges.

PRODUCT	Quantity/pack	Price €	Minimum order
VELAJOINT ANGLE	25 pieces		1 piece
VELAJOINT EDGE	25 pieces		1 piece

VELAPATCH

adhesive butyl rubber sheets



Polyester felt sheets coupled with butyl rubber adhesives. Suitable as a waterproofing connector for drains and outlets for continuous waterproofing systems obtained by means of liquid membranes.

PRODUCT	Dimensions cm	Price €	Minimum order
VELAPATCH	37 x 37		1 piece

VELACEAM

neutralizing primer for asbestos cement



Special neutralizing primer suitable for encapsulating asbestos cement particles in the structures to be dismantled or recovered, having the function of optimising adhesion of ELASTOCEAM liquid finishing membranes.

Use

Specially designed products for the treatment of asbestos cement structures to be recovered or destined for disposal certified by Istituto Giordano.

Laying instructions

It can be applied by brush, roller, broom or airless sprayer only after carefully cleaning the structure, waiting until it has completely dried.

Wait until VELACEAM primer has completely dried before proceeding with structure disposal or recovery and apply a coat of ELASTOCEAM membrane.

Do not apply at a temperature higher than +35°C or lower than +5°C or in case of imminent risk of rain which may wash it away during the drying phase.

All this is subject to the control of supervising bodies and therefore it is necessary to act as prescribed by local regulations in force.

Colour: light blue - Consumption 0,250 lt/m²



PRODUCT	quantity per pack	Price per pack	packs/pallets
VELACEAM	5 litres		125
	18 litres		48
	1000 litres		1



ELASTOCEAM

finishing layer for asbestos cement



Liquid membrane with special additives which not only provides exceptional resistance to UV rays, atmospheric agents and ageing, but also solves the problem of asbestos cement recovery and, along with VELACEAM membranes, ensures complete certified encapsulating and finishing systems.

Use

Specially designed as a finishing layer in asbestos cement recovery systems.

Laying instructions

It can be applied by brush, roller, broom or airless sprayer only after carefully cleaning the structure, waiting until it has completely dried, after applying a coat of VELACEAM membrane.

Do not apply at a temperature higher than +35°C or lower than +5°C or in case of imminent risk of rain which may wash it away during the drying phase.

All this is subject to the control of supervising bodies and therefore it is necessary to act as prescribed by local regulations in force.

Standard colours: grey, brick red, white and green.

Average recommended consumption: 2 kg/m²



Green colour products are sold at 15 per cent more than the list price for each packaging



PRODUCT	weight per pack	Price per pack	packs/pallets
ELASTOCEAM	kg. 5		125
	kg. 10		60
	kg. 20		48



VELAFONDO GRIPERM

solvent-based bituminous paint



It's an oxidized bitumen and solvent-based elastic bituminous paint with high adhesive properties. It's a waterproofing, anti-dust and antirust product suitable for saturating porosity of concrete.

Use

It can be used as a foundation primer for laying bituminous membranes, as a first waterproofing layer for retaining walls, vertical walls, eaves, flashings and gutters or as an antirust and protective paint for pipes, tanks and buried pilings. Its specific gluing functions favour correct adhesion of bituminous membranes to the laying surface. Unlike conventional primers, it provides increased adhesion to concrete slabs, highly reducing time of application of bituminous membranes and lower flame exposure allows it to keep unchanged its technical and physical characteristics, thus achieving top level laying results.

Laying instructions

Mix well before use. It should be laid on dry and clean surfaces.

It can be applied by brush, broom or roller.

Do not apply under extreme hot or cold weather conditions.

Average recommended consumption: 0,300 kg/m²

PRODUCT	weight per pack	Price per pack	packs/pallets
VELAFONDO GRIPERM	kg. 5		96
	kg. 10		60
	kg. 20		36



VELABASE - PRIMER 18

solvent-based bituminous primers



Bitumen and solvent based bituminous primers.

Use

It can be used as a foundation primer for laying bituminous membranes, as a first waterproofing layer for retaining walls, vertical walls, eaves, flashings and gutters or as an antirust and protective paint for pipes, tanks and buried pilings. Its specific gluing functions favour correct adhesion of bituminous membranes to the laying surface.

Laying instructions

It can be applied by brush, broom or roller.

It should be laid on dry and clean surfaces.

Average recommended consumption: 0,120 - 0,150 kg/m²

PRODUCT	weight per pack	Price per pack	packs/pallets
VELABASE	kg. 5		96
	kg. 10		60
	kg. 20		36
PRIMER 18	kg. 18		36

VELQUA

ecological bituminous primer



Low viscosity, fast drying water-based non toxic bituminous emulsion. Due to the absence of solvents, it can be applied in enclosed or poorly ventilated areas. It eliminates fire risk during transport, storage and laying on site. It does not release toxic vapours into the environment and is not considered hazardous to operator's health.

Use

It can be used as a foundation primer for laying bituminous membranes, as a waterproofing layer for retaining walls, vertical walls, eaves, flashings and gutters or as a protective paint for pipes, tanks and buried pilings. Its specific gluing functions favour correct adhesion of bituminous membranes to the laying surface.

Laying instructions

It can be applied by roller, broom, brush or airless sprayer.
Average recommended consumption: 0,150 - 0,300 lt. /m²

PRODUCT	quantity per pack	Price per pack	packs/pallets
VELQUA	lt. 5		125
	lt. 10		60
	lt. 18		48


VELABIT

cold asphalt emulsion



Pasty emulsion made up of bitumen, water and fillers which can be diluted with water and can be mixed with various fillers, such as concrete, sand or other materials.

Use

Suitable for small waterproofing, restoration or repair works. It can be used to repair cracks in road surface.

PRODUCT	weight per pack	Price per pack	packs/pallets
VELABIT	kg. 5		125
	kg. 10		60
	kg. 18		48

VELAPRIMER ACW

water-based synthetic primer



Liquid base coat based on emulsified synthetic resins applicable to any kind of dry building surface, suitable for subsequent application of water or solvent-based coating or waterproofing layers with excellent consolidating properties.

Consumption: 0,150/0,250 lt/m²

PRODUCT	quantity per pack	Price per pack	packs/pallets
VELAPRIMER ACW	lt. 5		125
	lt. 10		60
	lt. 18		48

VELUMIN

solvent-based aluminium paint



Special aluminium-based paint having a protective and refractive function in case of exposure to sunlight.

Use

Due to its peculiar UV resistance, it can be used as a protective paint for bituminous membranes, pipes and metal tanks, highly reducing degradation caused by atmospheric agents.

Laying instructions

Mix well before use until you obtain a homogeneous paint, then proceed with application by brush, broom or roller.

If it is used as a protective paint for bituminous membranes, it can be applied only 6 months after laying and must not be applied during the warmest hours of a summer day. Lay the product in one single coat, always moving in the same direction, allowing aluminium particles to stay on the outer surface of the membrane.

Average recommended consumption: 0,120 - 0,150 lt/m²

PRODUCT	quantity per pack	Price per pack	packs/pallets
VELUMIN	lt. 5		96
	lt. 10		60
	lt. 18		36



VELACOLOR

coloured protective paint



It's a water-based protective paint made up of elastomeric resins and mineral pigments with excellent resistance to solar radiation and atmospheric agents.

Use

It can be used as a protective paint for bituminous membranes, fibre cement coverings, concrete structures, etc. It represents a valid alternative to protective aluminium paints and is available in various colours, making it possible to achieve better decorative effects.

Laying instructions

It can be applied by brush, roller or airless sprayer to the surface to be protected. Do not apply to any surface which is destined to remain in permanent contact with water.

It can be applied to bituminous membranes only 6 months after laying and must not be applied during the warmest hours of a summer day.

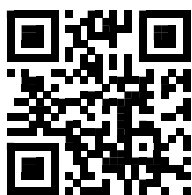
Available colours: white, grey, brick red, green

Average recommended consumption: 0,300 - 0,500 kg/m²



Green colour products are sold at 15 per cent more than the list price for each packaging

PRODUCT	weight per pack	Price per pack	packs/pallets
VELACOLOR	kg. 5		125
	kg. 10		60
	kg. 20		48



www.iivela.it

INDUSTRIA IMPERMEABILIZZANTI
ISOLANTI TERMOACUSTICI
VERNICI EMULSIONABILI LAVORAZIONI AFFINI s.r.l.



Via della Grafica, 55 - Ozzano Emilia (Bologna) Italy
tel. 051 79.91.71 - fax 051 79.66.50
iivela@iivela.it